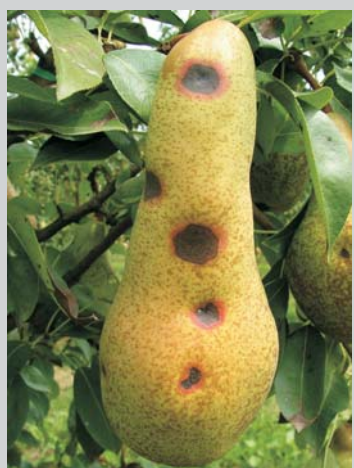




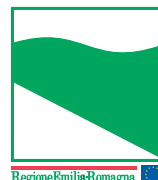
Diagnostic and extension

Plant Protection Service, through its experts who hold courses, conferences and publish scientific and explanatory articles, is a reference point for technicians and growers. The diagnostic activity is an essential part of the extension service: each year thousands of plant and soil samples are examined to determine the level of infestation or contamination and therapies and agronomic practices are recommended.

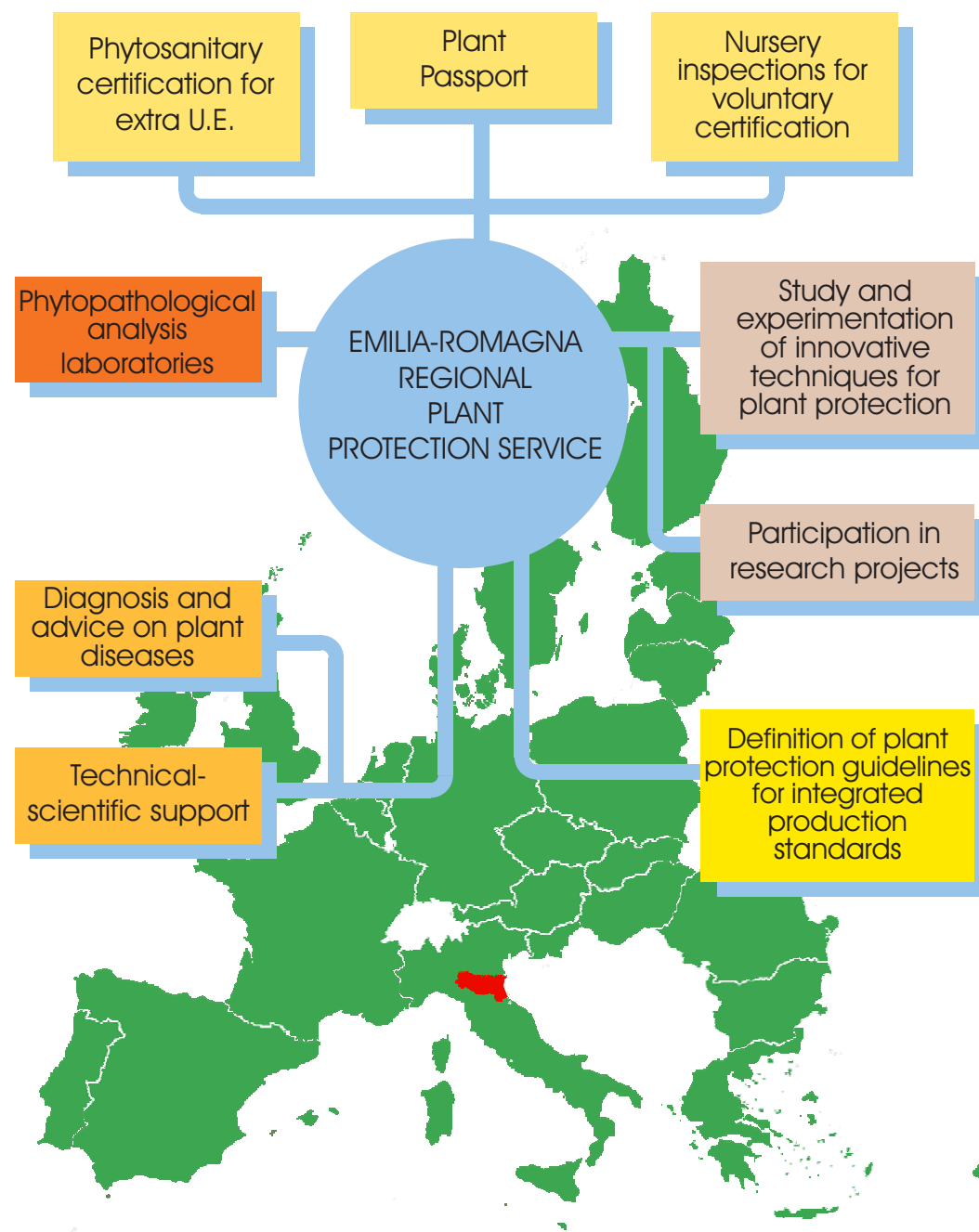


Integrated Pest Management

The aim of the integrated pest management is to achieve quality agricultural produce and protect the environment. The Emilia-Romagna region has defined "Integrated Production Guidelines" for the most important crops grown in the region.



EMILIA-ROMAGNA REGIONAL
PLANT PROTECTION SERVICE



CENTRAL OFFICE: Via di Saliceto, 81 - 40128 Bologna Tel. +39-0515278111 Fax +39-051353809
e-mail: omp1@regione.emilia-romagna.it posta certificata: omp1@postacert.regione.emilia-romagna.it
<http://agricoltura.regione.emilia-romagna.it/fitosanitario>
LABORATORIES: Via di Corticella, 133 - 40128 Bologna Tel. +39-0515278111 Fax +39-051370285
RAVENNA OFFICE: Via Pirano, 11 - 48122 Ravenna tel. +39-0544421523 fax +39-0544590285
e-mail: fitosanravenna@regione.emilia-romagna.it
CESENA OFFICE: via Leopoldo Lucchi, 285 (complesso Montefiore) - 47521 Cesena (FC)
tel. +39-0547639500 fax +39-0547382030 e-mail: fitosancesena@regione.emilia-romagna.it
FERRARA OFFICE: Via Bologna 534 - 44124 Chiesuol del Fosso (FE) tel. +39-0532976608 fax: +39-0532902948
e-mail: fitosanferrara@regione.emilia-romagna.it

To ensure the prompt handling of the tasks assigned by the regional administration, the Plant Protection Service is also supported by:

Provincial phytosanitary Consortium in: Via Santi, 14 - Direzionale Cialdini 1 - 41123 Modena
tel. +39-059221877 fax +39-059221887 e-mail: fitosanmodena@regione.emilia-romagna.it - www.fitosanitario.mo.it
Provincial phytosanitary Consortium in: Via Gualerzi, 32 - 42124 Mancasale - Reggio Emilia
tel. +39-0522271380 fax +39-0522277968 e-mail: fitosanreggio@regione.emilia-romagna.it - www.fitosanitario.re.it
Provincial phytosanitary Consortium in: Via Gramsci, 26/C - 43126 Parma - tel. +39-0521292910
fax +39-0521291233 e-mail: fitosanparma@regione.emilia-romagna.it - www.fitosanitario.pr.it
Provincial phytosanitary Consortium in: Palazzo dell' Agricoltura Via C. Colombo, 35 - 29122 Piacenza
tel. +39-0523571245 fax +39-0523579532 e-mail: fitosanpiacenza@regione.emilia-romagna.it
www.fitosanitario.pc.it

Phytosanitary certification and controls

In order to avoid the introduction and spreading of harmful quarantine organisms, Phytosanitary Inspectors check plants and plant products imported from and exported to Third countries and issue appropriate phytosanitary certificates.

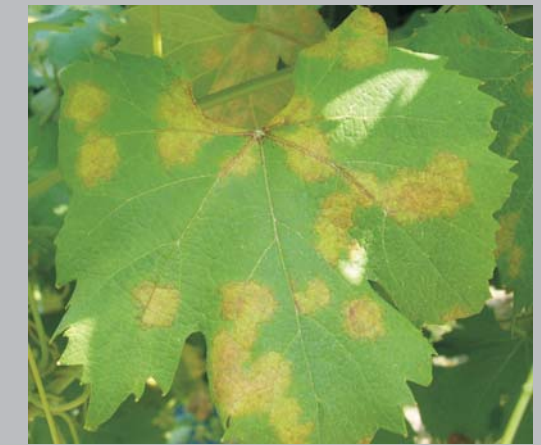
Inspections are also carried out in the field on commercial farms, to license producers listed in the Official Register and authorize the issue of the Plant Passport for the regulated products so that they can circulate freely in the European Union.

Moreover, Plant Protection Service checks mother-plant fields and nurseries in the framework of the National Voluntary Phytosanitary and Genetic Certification Scheme.



Phytopathological analysis

Plant Protection Service's laboratories and climatized glass-houses are used to carry out analysis and tests on plants grown under controlled conditions. Insects, mites, nematodes, fungi, bacteria, viruses and weeds are studied by specialists.



SERVIZIO FITOSANITARIO ITALIANO	
PASSAPORTO DELLE PIANTE CE	
SERVIZIO FITOSANITARIO REGIONALE DI	
COD. PRODUTTORE	
N. DI SERIE	/31345
SPECIE BOTANICA	SOLANUM TUBEROSUM
QUANTITA'	KG. 10
PAESE D'ORIGINE	ITALIA

SERVIZIO FITOSANITARIO ITALIANO	
PASSAPORTO DELLE PIANTE CE	
SERVIZIO FITOSANITARIO REGIONALE DI	
COD. PRODUTTORE	
N. DI SERIE	
COD. PRODUTTORE ORIGINARIO	
SPECIE BOTANICA	
QUANTITA'	
PAESE D'ORIGINE	

SERVIZIO FITOSANITARIO ITALIANO	
PASSAPORTO DELLE PIANTE CE	
SERVIZIO FITOSANITARIO REGIONALE DI	
COD. PRODUTTORE	
N. DI SERIE	/2157
COD. PRODUTTORE ORIGINARIO	
SPECIE BOTANICA	BETA VULGARIS
QUANTITA'	KG. 15.143
PAESE D'ORIGINE	ITALIA



Research and experimentation

Plant Protection Service operates with its own resources and equipment, in cooperation with University Institutes, public bodies and private companies. Experimental and demonstration fields are set up to develop and test new techniques and disease and pest control methods and identify useful genetic resistance traits. The laboratories are also involved in setting up new methods of analysis for the detection and identification of harmful organisms.