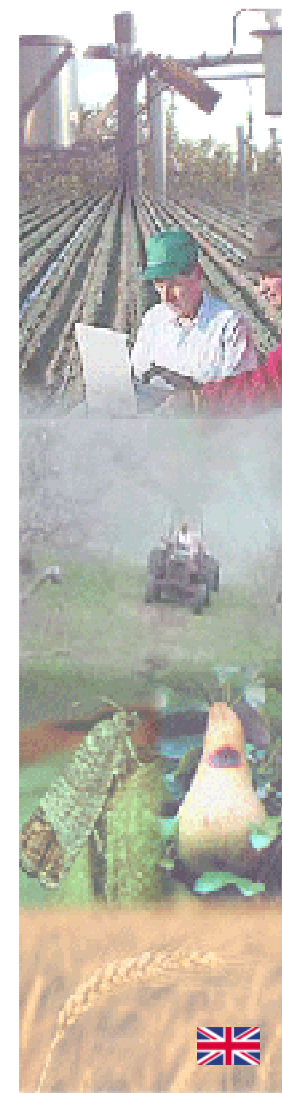


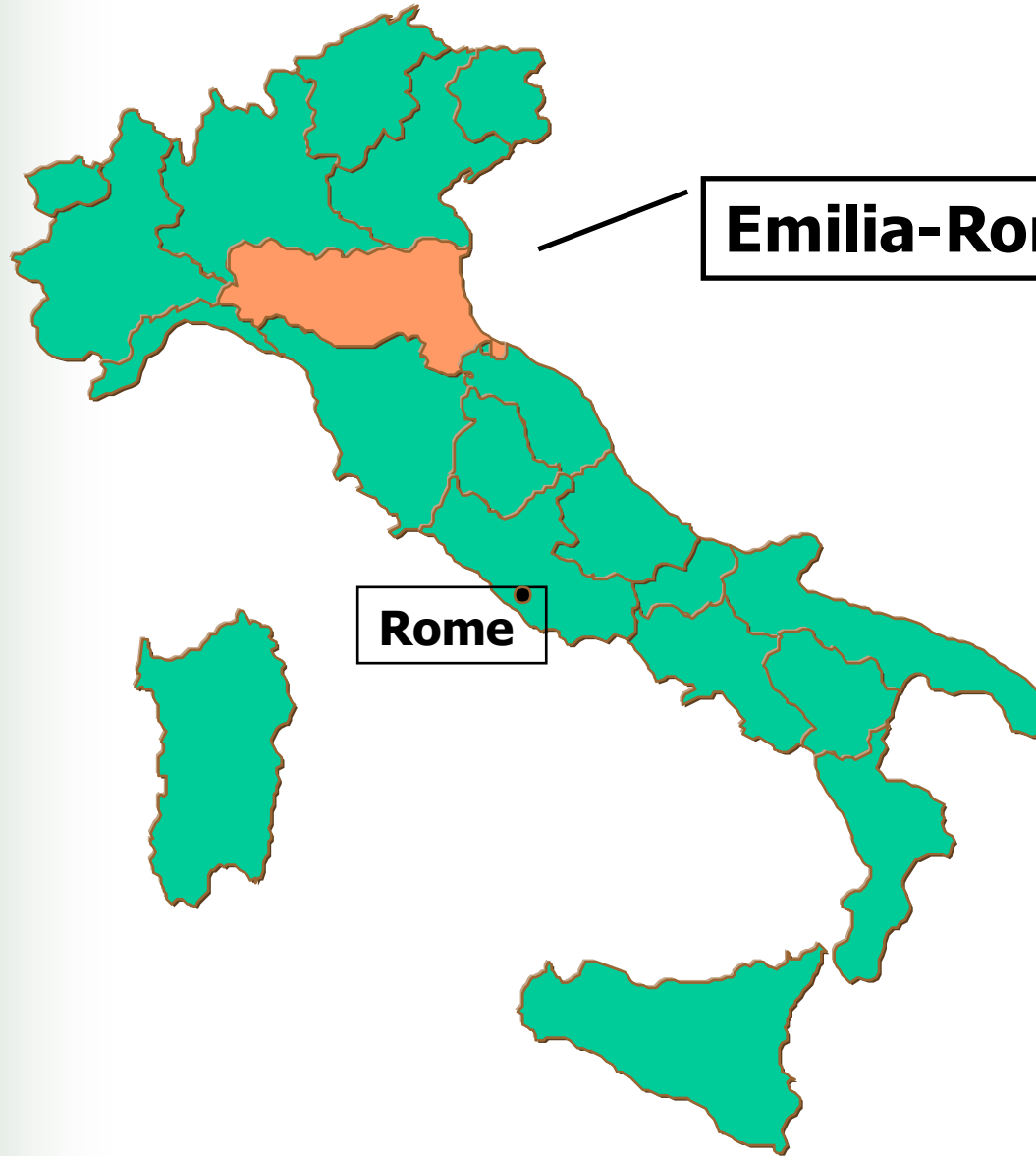
# Plant Protection Service Emilia-Romagna Region Agriculture Department



Where we are



Where we are



**Emilia-Romagna Region**

**Rome**



Where we are

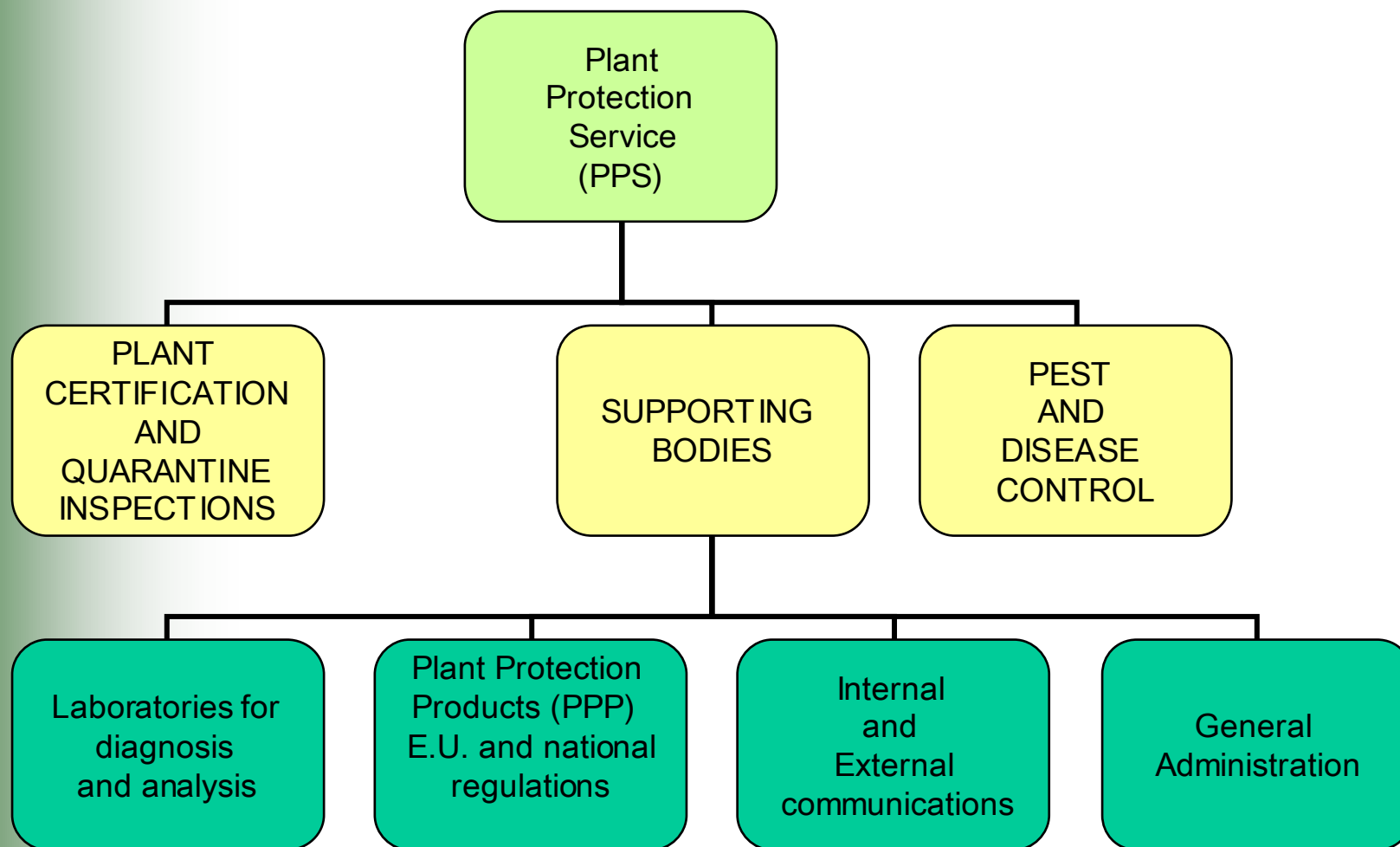
# Mission

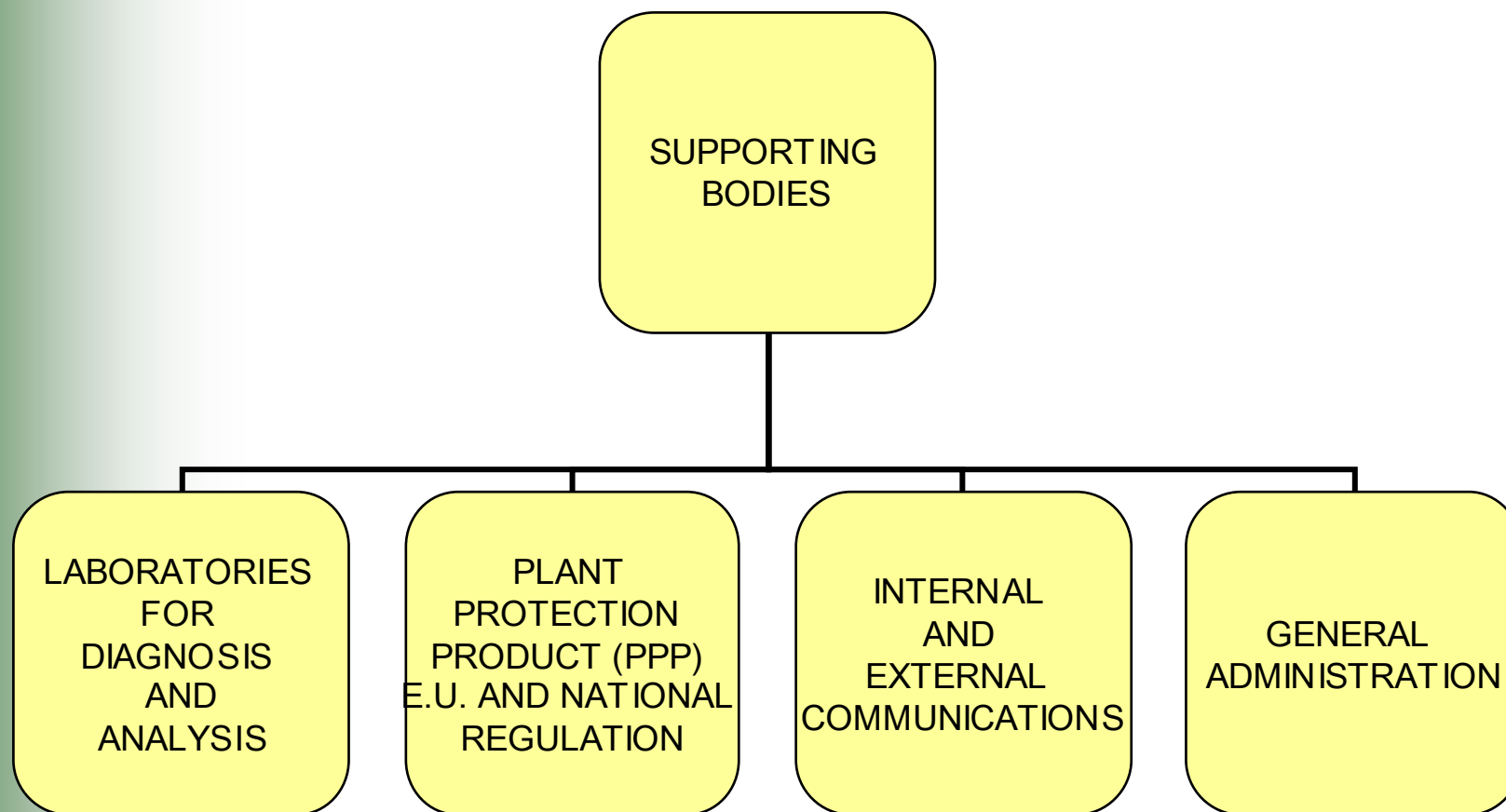
**To avoid and contain the spread of harmful organisms and the damages they cause to the crops and to environment within a framework of a sustainable and high valuable regional crop production**

# Activities

- **Preventive actions for harmful organisms with high phytosanitary risk.**
- **Define innovative pest and disease control strategies compatible with high valuable crop productions and the respect of the environment**
- **Promote the regional production of a high quality plant multiplication material**
- **Collaborate in defining regional, national and E.U. phytosanitary rules**
- **Provide special tools for phytosanitary purposes**

# Organisation







- Definition of pest, disease and weed control strategies
- IPM and biological control supervision
- Professional extension activity for the farms
- Warning Service for pests and diseases of the most important crops grown in the region
- Plant protection in forestry and urban areas
- Research and experimentation in plant protection
- Control programmes about the use of plant protection products

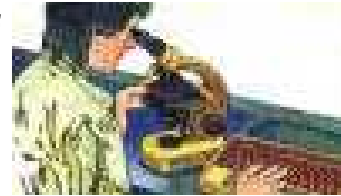


# Integrated Production organisation



Research and experimentation

Presence of  
qualified  
field  
technicians



Relationship with  
other regions



**Integrated  
Production  
System**

Technical  
assistance  
for farmers



Relationship with  
agrochemical firms



Warning service



Supervision of the  
extension activity



Crop protection

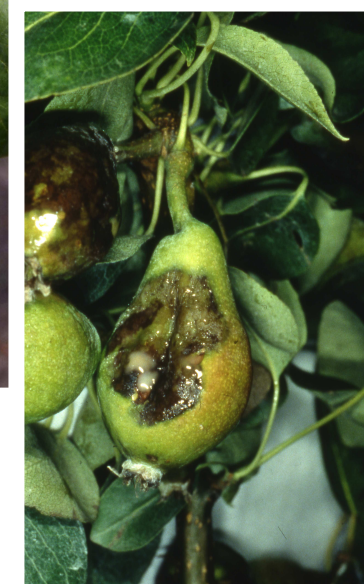
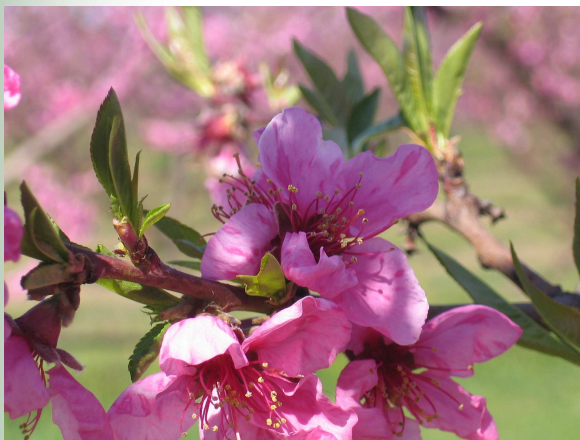
- Application of E.U., national and regional regulations
- Territorial monitoring
- Application of “compulsory control Decrees” for some pests and diseases
- Inspections and certifications for import/export commodities
- Authorisations and accrediting (Plant Passports, RUP, Plant production and marketing)
- Phytosanitary certifications for plant propagation material





## TERRITORIAL MONITORING AND OFFICIAL INSPECTIONS FOR:

- **GRAPEVINE FLAVESCENCE DOREE (GFD)**
- **POME FRUIT FIRE BLIGHT**
- **POTATO BACTERIAL DISEASES**
- **STONE FRUIT SHARKA (PPV)**



- **WOOD PACKAGING MATERIAL CERTIFICATION (ISPM 15)**
- **AMENITY TREES PHYTOSANITARY MANAGEMENT**





- **NURSERY INSPECTIONS**
- **VIRUS-FREE CERTIFICATION**
- **CERTIFICATION SCHEMES FOR FRUIT PLANT PRODUCTION**
- **INSPECTIONS OF SEED CROPS INTENDED TO BE EXPORTED**

